

# NEWTON VILLAGE NEWSLETTER

MAY 2020

FREE Published independently

---

## NEWTON VOLUNTEERS

Within days of the first advice that some people should self-isolate, a call went out asking villagers to volunteer to support people who were no longer allowed to go out. Within hours we had a team of 35+ willing helpers. A letter was distributed to every house in the village with details of who they should contact if help was needed. Paul Devlin and I offered to be the first points of contact. So, when somebody phones, we post a general call for help on the WhatsApp group that was set up so we could keep in touch with each other. Whoever can help is then given details of the request. The volunteer contacts them so they can get all the details needed. This helps to maintain confidentiality. The volunteer then lets us know when they have removed their superhero cape and the request can be signed off. So far, we have had relatively few calls for help as we are lucky to live in a very caring community and friends and neighbours are generally helping out.

From this small acorn a giant oak has grown, and the volunteer group is now supporting the community on a much wider scale. It was felt that some villagers in total isolation could be feeling quite lonely and one of our lovely residents, Anita French who is a renowned cook, said she would like to do some baking so that we could deliver goody bags and a smile. The first week 6 volunteers delivered about 20 goody bags containing sweet and savoury homemade bakes. There were also some eggs, kindly donated by Will and Mandy Fison and, those all-important toilet rolls donated by the golf club. Although the volunteers who deliver are careful to abide by the '2 metre' rule by ringing the bell, popping the bag on the doorstep and then standing well back, it is a lovely opportunity to chat to the recipient for a few minutes and check everything is ok. Many of the volunteers incorporate their deliveries into their hour's permitted exercise. Last week another 20 residents received bags and this Easter weekend over 40 households will receive an Easter bag with cakes, a few chocolates and all important hot cross bun.

The volunteers have reported that the goody bags have been really appreciated and the thank you cards we've received all say how glad they are to live in such a thoughtful and supportive village.

In addition to this, thanks to the generosity of some of the village organisations and the volunteer group, we will be delivering Easter Eggs to all the children in the village. Things are tough for them too, so it was thought they deserved a treat too.

We have tried to think of everybody and this Easter weekend our postman will receive a cake and Easter eggs to thank him for all he does for the village. Anita has also baked a cake for Will and Mandy to say thank you to them too.

As well as helping out in an emergency we shall continue to deliver goody bags for as long as these extraordinary restrictions are in place. Do let me know if you know of somebody that you think would appreciate a treat.

Although these are challenging times for everyone, it has really brought out the best in people and further strengthened our sense of community. So, I would just like to finish by thanking our fantastic baker, all of our volunteers, the business that have donated goods and the village organisations who have supported us too.

Just to remind you, the contact numbers are:

PAUL DEVLIN                      07802872707

SUE PRESLAND    07881383998 or 01787379204



# THANK YOU'S

4 Church Road  
Easter Monday,  
13 April 2020

Dear Members of the Fireside and Newton Village Hall Committee,

I would just like to thank you for your lovely bag of Easter gifts!

*I really appreciated your thoughtfulness in including me in the distribution of the Easter Goody bags. I might be here for some time!*

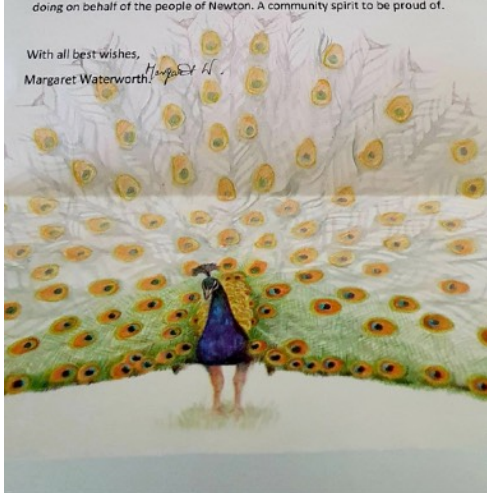
*I am lucky to be out of London with Kate and Jon.*

Thank you once again for the Easter Bag, and for all the other work you are doing on behalf of the people of Newton. A community spirit to be proud of.

With all best wishes,

Margaret Waterworth!

*Margaret H.*



Thank you so much from us, our boys loved the surprise knock on the door. I didn't expect us to be included as I specifically kept quiet, so for someone to realise there's 2 little boys now here at Carlton cottage and to include them is really touching.

Thank you to all the volunteers and your hard work and lovely gestures it's very much noticed and valued



what a lovely bunch and a lovely village ❤️ happy Easter to you all

19:12



Excuse my feral kids today in need of hair cuts and dressing themselves but they were over the moon with their lunch! Thank You! And to the lovely chap who delivered, I don't know his name but he does the Poppies too! Happy Easter 🐣

14:02

## Thank you!

Thanks so much to those kind villagers who donated and delivered eggs to children this Easter weekend. Chloe and Benjamin were delighted!

Best wishes  
John Forth





5 Nickelsons Court

Dear Villagers, Council  
Members and Fireside Club,  
Thank you so much for the  
Easter goodies so kindly  
donated to us. I am very  
grateful to you all for your  
generosity and I do hope  
you enjoyed the unusually  
quiet and relaxed Easter  
holiday.

Sincerely

Elizabeth Shallen

Another heart felt thank you from  
Shirley & John at 9 LINKS VIEW. It  
all you lovely village people who  
have brought us Kate Chen.

Dear Sue.

Please pass on our  
grateful thanks to those who  
provided the contents of our  
"goodie bag". What a lovely  
surprise on a grey day.  
In such a busy village and  
know there is support and help  
out there when needed.

When everything is  
dosing down, shutting up and  
something's going for ever it is  
reassuring that goodwill flourishes  
and no virus can knock it down.

Keep well everyone  
and again many thanks

Wendy & John



POSTCARD 7, LINKS VIEW

Dear Sue, Thank you so much for  
the lovely surprise of the "goodie bag"  
also how kind of you for all the  
organization, and members of the volun-  
teer group in supplying the treats.  
I am managing reasonably well -  
of course with the help of Jonathan,  
I have not been out, but "I" does the  
shopping.



The Netherlands: Dr Louis Vermeulen (Acadisch  
Medisch Centrum, Amsterdam) is trying to give  
healthy bowel cells an advantage over cancer cells.

My regards Jean

WORLDWIDE CANCER RESEARCH is a charity registered in Scotland. No. SC022948.

I HOPE YOU ARE ALL WELL

Tulips are grown all over  
Netherlands, and their br  
colours are a common sight  
throughout the countryside



# NEWTON PARISH COUNCIL NEWS

We were able to meet in April via a Zoom video conference call. Please see Minutes.

## KEY MESSAGES

### **Appointment of New Clerk**

As of May 1st 2020, Dave Crimmin will become the Clerk to Newton Parish Council. We welcome him back to the position and look forward to his advice and guidance. Councillors would like to take this opportunity of thanking Miss Teresa Devine for her work as our Locum Clerk since December 2019. Her work was of a very high standard and we wish her the very best for the future.

### **Regeneration of Facilities On The Village Playing Fields.**

You will recall that the Parish Council recently received planning permission to rejuvenate the children's playground area, to build a Multi Use Games Area and to install outdoor adult gym equipment. We are pleased to announce that we have applied for grants from Babergh and Mid Suffolk to help us meet the considerable costs of this exciting project. Decisions about grant allocations tend to take time and we understand that we will not know if we have been successful until October 2020. Realistically, therefore, we do not expect work to begin until Spring 2021.

### **Newton Neighbourhood Plan.**

In February 2018, Newton Parish Council asked for volunteers to take the lead in writing a Neighbourhood Plan for our village. Since that 'call to arms', a strategic team has been committed to completing this long and complicated document. As a village you were consulted on all aspects of the plan and your contributions have formed the basis of the Plan.

We are pleased to report that after many months of toil, the draft Plan is nearing completion. We hope to have the last few additions completed by the beginning of May. The Plan then goes to Babergh and Mid Suffolk to check if it contains all necessary contextual information and data. If they are happy with the contents there follows a long consultation process, which is the time that villagers and the wider community have the right to comment on the draft Neighbourhood Plan. In the June newsletter further details of the public consultation will be provided. Finally, on behalf of the Parish Council I would like to thank all the strategic team for their enthusiasm and commitment.

### **Fly Tipping in the village.**

Unfortunately due to the Council recycling centres being closed because of the Covid 19 virus, some thoughtless people have taken to leaving their unwanted items in our Village Hall car park. Although the PC has no means of dealing with these discarded items, we still need to try minimise the effect on our environment. Copy cat fly tipping does occur and so it is important that as villagers go on their daily walks they keep a watchful eye out for any new fly tipping in any part of the village. It should be reported to any member of the Newton Parish Council as soon as possible.

### **Exercise on the village playing field.**

Newton Trust and Newton Parish Council agreed to keep our recreation ground open for people to take their daily walks and to exercise their dogs. You will be aware that regrettably we felt it necessary to close the children's play area for social distancing reasons.

Thank you to everybody who is being responsible by keeping to these Government guidelines.

As golf clubs are shut across the country, this ban includes the recreation ground. Therefore players should refrain from practising on the playing fields and notices have been put up to this effect.

**Local information is updated on  
our Facebook Group - please join  
if you haven't already?**

[https://www.facebook.com/groups/  
NewtonVillageNewsletter/](https://www.facebook.com/groups/NewtonVillageNewsletter/)

Best wishes and stay safe.

**Paul Presland, Chairman**

#### **NEWTON PARISH COUNCIL**

**Paul Presland – Chairman**  
01787 379204

**Sue Crawte – Vice Chairman**  
01787 377664

**Russell Bower**  
07838 060878  
**Laura Smith**

**Rita Schwenk**  
01787 210838  
**Philip Taylor**  
01787 211265

## KEY INFORMATION

### Village Hall

The Village Hall is closed and no clubs or activities are taking place until further notice.

### All Saints Church

The church is closed and locked until further notice.

### The Saracens Head

The pub is closed until further notice.

### The Golf Club

The golf club and course is closed until further notice.

### Waste Collection

**Brown bins will no longer be collected.**

Please contact Lee Parker on 01787 376073 if your brown bin is full, we might have a way to dispose of it locally.

### Mobile Library

This service is now suspended

Contributions for the next Newsletter

by 21<sup>st</sup> May please to the Editor:

Sue Crawte, 1 Butchers Cottage, Newton CO10 0QE

Telephone: 01787 377664 email: [newtonvillagenewsletter@gmail.com](mailto:newtonvillagenewsletter@gmail.com)

## FIRESIDE CLUB QUIZ – ANSWER SHEET

1 Coracle	11 Cornice
2 Coral	12 Corona
3 Cordial	13 Coroner
4 Cordite	14 Corpulent
5 Corduroy	15 Corral
6 Cordwainer	16 Corrigible
7 Coriander	17 Corroborate
8 Cormorant	18 Corrode
9 Cornea	19 Corrugated
10 Cornet	20 Corundum

**ALAN VINCE :** *As the Fireside Club is not meeting during the Coronavirus crisis, the members will be missing their regular quizzes so I have produced this one for them. Appropriately all the answers begin with SPR..... (You just need a dictionary for the answers*

## **NEWTON GREEN FIRESIDE CLUB QUIZ**

### **SPRING**

1. What SPR is the season when vegetation begins to appear?
2. What SPR is a platform used for diving etc.?
3. What SPR is a South African gazelle?
4. What SPR is a device of bent or coiled metal used to drive clockwork etc.?
5. What SPR is a breed of dog used for flushing out game?
6. What SPR is a surface which quickly returns to shape when squeezed or stretched?
7. What SPR means to jump, move rapidly or suddenly?
8. What SPR is a device for measuring weight?
9. What SPR is a young person?
10. What SPR is a thorough cleaning?
11. What SPR is a place where water etc. wells up from the ground?
12. What SPR is a restless or lethargic feeling?
13. What SPR is to scatter or distribute in small amounts?
14. What SPR is to run a short distance at speed?
15. What SPR is an elf, fairy, or goblin?
16. What SPR is a mixture of wine and soda water?
17. What SPR is an extravagant outing, a bout of fun or drinking?
18. What SPR is a small branch or shoot?
19. What SPR means vivacious, lively, or brisk?
20. What SPR is to begin to grow, put forth shoots?





## THE LOCKDOWN EASTER QUIZ

This Quiz is free!  
But if you wish, please make a donation to



### Can you find the flowers in the cryptic clues?

1. Peals from a Kentish town (10,5)	Canterbury Bells
2. Keen card game (3, 3, 5)	Red Hot Poker
3. Under your very nose (6)	Tulips
4. Cuddle on a foggy night (4, 2, 1, 4)	Love in a Mist
5. Wed into money (8)	Marigold
6. Sheep found in these (5)	Phlox
7. Partner cut badly (4, 4, 8)	Love Lies Bleeding
8. Active sovereign (4, 6)	Busy (Bizzie) Lizzie
9. Automobile country (9)	Carnation
10. Remember me (6,2,3)	Forget Me Not

### Spring /Easter Acrostic

Can you think of up to eight names of sweets/ chocolates beginning with these different letters?

<b>S</b>	Smarties Spangles Strawberry Laces Sherbert Fountain Starmix Shrimps Snickers Sports Mix Starburst Starbar Skittles Swizzles Sugar mice Sherbert Lemons Sugared Almonds .....
<b>P</b>	Parma Violets Polos Pastilles Picnic Peanut Brittle Penguin Pear drops Peppermint Creams Peanut M and Ms Pez Poppets Praline Peppermints Percy Pigs .....
<b>R</b>	Rolos Revels Raspberry Ruffles Ripple Roses Refreshers Rhubarbs and Custards Rands Reese's Rainbow Drops Rock Rocky Road Fudge .....
<b>I</b>	Iced Gems Icebreakers Icy cups Invalid Butter Toffee Irn Bru Bars Idaho Spud.....
<b>N</b>	Nougat Nestle Nerds Neapolitans Nestle Crunch .....
<b>G</b>	Gum Gobstopper Galaxy Gumdrops Green and Blacks Gummy Bears Guylian Giant Strawbs Ginger Chocolate Glee's Gold Mine Gold Rush .....
<b>T</b>	Twix Treats Toblerone Toffee Crisp Twirl Topic Terrys Chocolate Orange Truffles Time Out Turkish Delight Twinkies Trebor Terry's All Gold Trio Toffee Bonbons Tunes Toffees .....
<b>M</b>	Mars Bar Milky Way Mints Mentos Maltesers Mint Thins Mini Eggs Munchies M and Ms Milky Bar Milka Maoam Midget Gems Marshmallows Mint Imperials Minstrels Matchmakers Marathon Milk Bottles Murray Mints Mackintosh .....
<b>E</b>	Easter Egg Eclairs Everton Mints Edinburgh Rock Elizabeth Shaw Extra Strong Mints .....

### Number Sentences

(e.g. 12 S o t Z = Signs of the zodiac)

1. 650 = S i t H o C	Seats in the House of Commons
2. 1 = F i t G	Foot in the Grave
3. 88 = K o a P	Keys on a piano
4. 2 = H a B t O	Heads are better than one
5. 10 = P f Q i S	Points for Q in Scrabble
6. 12 = Z i a T	Zeros in a trillion
7. 18 = H o a G C	Holes on a golf course
8. 3 = M i a B	Men in a boat
9. 24 = H F T	Hours from Tulsa
10. 44 = D D	Droopy drawers
11. 1485 = B o B F	Battle of Bosworth Field
12. 6 = O G M f C H	Olympic gold medals for Chris Hoy
13. 90 = D i a R A	Degrees in a right angle

VE Day 75th Anniversary Celebrations

# STAY AT HOME STREET PARTY!

Friday 8th May 2020

DECORATE YOUR HOUSE RED, WHITE  
AND BLUE AND ENJOY A PICNIC  
IN YOUR FRONT GARDEN

*Commemorate the end of WW2 by celebrating with your family,  
friends and neighbours!*



Let's join in!  
1:00 pm in our own gardens!

**MINUTES OF THE MEETING OF NEWTON PARISH COUNCIL**  
**Held on Wednesday, 8<sup>th</sup> April 2020 at 7.30 pm by Zoom Video-Conference**

**Present:**

Councillors: Paul Presland (Chairman), Russ Bower, Sue Crawte, Rita Schwenk, Laura Smith and Philip Taylor.

**In Attendance:** Cllr James Finch (Suffolk County Council), Cllr Lee Parker (Babergh District Council) and Theresa Devine (Locum Clerk)

**20/131 Apologies**

None.

**20/132 Declaration of Interests and Requests for Dispensation**

None.

**20/133 Minutes of the Meeting held on Wednesday, 12<sup>th</sup> February 2020**

The Minutes of the meeting were agreed by the Council as a true record with the following amendment: **Minute 20/123** final paragraph to read:

**‘Abbey House**

Lee Parker, in his capacity as a member of Newton Trust, was making enquiries about the extent of Trust land outside Abbey House.’

(The Minutes to be altered by hand on the original document.)

**20/134 Reports from Borough and County Councillors**

**Report from Cllr Lee Parker (Babergh District Council)**

A written report from Cllr Parker had been received and read by Councillors. Cllr Parker drew attention to the following points:

a) Babergh District Council is responsible for the **Business Grant Fund**. Nearly 100% of eligible businesses within the district have applied to receive a grant of £10,000. Applications are being processed within two days. A second tier of grant is available for leisure and retail up to £25,000. Only 30% of eligible businesses have made an application.

**b) Help and support for the needy and vulnerable during COVID-19.**

Sue Calver, a Locality Officer is working alongside Cllr Parker and Cllr Finch to supply help to those in need during COVID-19 restrictions. Up to £2,500 can be given to local communities to cover the cost of volunteers’ expenses such as petrol claims etc. It was considered that some funds might be needed in Newton. Cllr Parker to will contact the Chairman with more information. Any assistance would be put into the Parish Council funds as a holding place.

**c) Recreation Area**

Cllr Parker confirmed that the Council’s application for funding to develop The amenities in the playground had been received. The application will be

checked thoroughly and then be passed to Cabinet in September. Cllr Parker stated that the Trust needs to confirm by a Minute that it agrees to building being erected on Trust land. Cllr Taylor will take action on this matter.

d) **Cabinet Meetings and Full Council Meetings** are taking place by video. The public may join **Full Council Meetings** but questions must be lodged 7 days in advance.

**Report by Cllr James Finch (Suffolk County Council)**

Cllr Finch thanked Newton for all the work being done to help people in the community during COVID-19. He confirmed that Sue Calver will be handling the data connected with the help: owing to GDPR neither Cllr Parker or Cllr Finch will see the lists.

The following points were noted from Cllr Finch's report:

- a) **TRIBE** - an update was given on the work done being done by Tribe volunteers. (Cllr Crawte reported that she had experienced difficulties in registering as a volunteer with Tribe as the system could not recognise her address and defaulted to the address of the Golf Club. Cllr Finch offered to take swift action to look into this matter with a view to resolving the issue
- b) **Suffolk Highways** – it is a priority of the Council to keep the Highways operational. However, as a number of staff are in isolation and others are being transferred to other COVID-19 tasks, Highways works will probably be limited to high priority works.
- c) **Food Banks** - £60,000 has been placed into provisions for Food Banks by the County Council. Cllr Finch suggested that some people may wish to make a donation to costs if their need for help was owing to being vulnerable rather than financial.
- d) **Local Bus Services** are facing difficulties as passenger numbers have greatly declined.
- e) **Recycling Centres** are closed.

**20/135 Locum Clerk's Report**

The Chairman read out the report received from the Locum Clerk. No action was required on any matter noted.

**20/136 Planning**

- a) **No: DC/20/00859 Outline Planning Application – Marks Meadow, Rectory Road, Newton, Sudbury.**  
A new application has been submitted for the erection of 3 detached dwellings with garages. The original application had been for one detached and 2 semi-detached dwellings.  
A discussion took place. **RESOLVED:** That Newton Parish Council **OBJECTS** to this application as the Council wishes to see fewer houses outside the Built Up Area Boundary.

**b) Refusal of Planning Application**

The Chairman had received correspondence from a local resident concerning refusal by Babergh Council of his appeal, following a refusal to grant planning permission. Cllr Parker informed the Council that once a Planning Appeal has been rejected the matter is closed outside of Judicial Review, which is very costly.

**c) DC/20/00755 – Erection of two-storey rear extension and installation of windows and door to south elevation and erection of garage – Brook Farm, Sudbury Road, Newton, Sudbury, CO10 0QS.**

**RESOLVED:** That Newton Parish Council **AGREES** to this application.

**d) DC/20/01139 – Erection of a grain store, construction of concrete pad and alterations to existing field access – Site Fronting the South West Side of A134 (formerly part of Braes Farm), Newton Green, Sudbury.**

**RESOLVED:** That Newton Parish Council **OBJECTS** to this application.

*Cllr Lee Parker left the meeting at this point – 8.37 pm.*

**20/137 Financial Report**

- a) The Locum Clerk spoke to the Financial Reports previously circulated. A break-down of Earmarked Reserves was also presented. (Copy in Appendix).
- b) The Chairman had made arrangements to ensure that cheques can be signed during the COVID-19 restrictions. Forms had also been filled-in by several Councillors to ensure more signatories would be available in the future. It would be necessary for Utility Bills and a Passport be taken to Barclays by those concerned.

**20/138 Hastoe Development**

There was nothing further to report concerning Hastoe. Villagers will be eligible for the new, affordable housing but strict criteria would be applied. COVID-19 had prevented any further progress.

**20/139 Neighbourhood Plan**

The Neighbourhood Plan was lodged with consultants. A Draft Plan would be produced by Navigus by the end of April. This would then be sent to Babergh District Council but no public consultation could take place owing to the lock down.

**20/140 Village Hall Committee**

No report.



**20/141 Newton Trust**

Cllr Taylor reported that the Golf Club had requested a 'rent holiday' and this had been agreed to: Owing to the lock down no one was playing golf or visiting.

**20/142 Questions to the Chairman**

**a) Rural Housing Partnership**

It is possible there will be affordable housing on land to the south of Airey Close. As the Public Consultation exercise took place took place in July 2019, Babergh MidSuffolk District Council now require more up-to-date information relating to village need. This matter will be discussed at the next Meeting of Newton Parish Council in May 2020.

**b) Parcels**

It was drawn to the Council's attention that no discussion had taken place about supporting the Villages' initiative to provide "feel good" parcels for vulnerable residents. A subsequent discussion took place and it was agreed by a majority vote to follow the lead of both the Village Hall Committee and the Fireside Club by donating £100.

**20/143 Annual Parish Assembly- Cancelled owing to COVID-19**

A discussion took place and it was agreed that written comments would be invited and posted on the website, rather than nothing at all being done.

**20/144 Recreation Ground (Reported on at the time of Cllr Parker's report)**

The Chairman informed the Council that the CIL 123 Application had been amended by him this week and a Community Grant had also been obtained. Section 106 monies had provided just over £7,000 towards the project, a further £25,000 had been obtained through a Community Grant and, the Parish Council would contribute £20,000 from its' funds. Funding already committed equalled £52,000 and an extra £87,000 was needed for a complete refurbishment of the Recreation Ground. This sum had been requested from the CIL Fund.

**20/145 Speed Signs**

Cllr Bower reported that the speed signs had been scheduled to be put up during the current week but had been delayed in arrival (from France) owing to the Coronavirus. The County Council were to erect the posts.

**20/146 Newton Charities**

**a)** The Chairman reported that Sue Presland will be taking over the Chairmanship of the **Newton Charities**.

**b) Request for funding from Kernos Drop-In Centre, Sudbury**

A discussion took place about the request from Kerno for a donation



towards their work. **RESOLVED:** That £100 be donated to Kernos.

## 20/147 Date and Time of Next Meeting

The next meeting will take place on Wednesday, 13<sup>th</sup> May 2020 at 7.30 pm by Zoom video conference.

The Chairman thanked the Locum Clerk for all the work done for the Council and the Clerk left the meeting at this point. (9.15 pm)

Cllr J Finch also left the Meeting.

## 20/148 Appointment of a Permanent Clerk to the Council

The Council confirmed the appointment of Mr Dave Crimmin as Newton Parish Clerk as from 1<sup>st</sup> May 2020.

In her absence, our Locum Clerk, Miss T Devine was thanked for her excellent Clerking during the past 4 months and the Council wished her the very best for the future.

### Newton Parish Council Financial Year 2019/20 Earmarked Reserves

#### Reserves held by NPC at 01.04 2019

	£
Asset Replacement	10,500.00
Village Hall	2,000.00
Legal Fees	1,000.00
Election Costs	1,500.00
Speed Watch	0.00
Newton Neighbourhood Plan	4,060.89
<b>Total Earmarked Reserves</b>	<b>19,060.89</b>

Bank Balances c/f at 01.04.19	66,109.72
Deduct Earmarked Reserves of	19,060.89
<b>General Reserve at 1st April 2019</b>	<b>47,048.83</b>

#### Expenditure from Earmarked Reserves to 28.02.2020

	£
Asset Replacement	0.00
Village Hall	0.00
Legal Fees	0.00
Election Costs	104.78
Speed Watch	0.00
Newton Neighbourhood Plan	1700.16
<b>Total Expenditure</b>	<b>1,804.94</b>

#### EARMARKED RESERVES AT 28TH FEBRUARY 2020

	£
Asset Replacement	10,500.00
Village Hall	2,000.00
Legal Fees	1,000.00
Election Costs	1,395.22
Speed Watch	0.00
Newton Neighbourhood Plan	2,360.73
<b>Total Earmarked Reserves</b>	<b>17,255.95</b>
General Reserves	39,737.09

#### TOTAL RESERVES AT 28TH FEBRUARY 2020

	£
Bank Balances at 28th February 2020	56993.04
Earmarked Reserves	17,255.95
General Reserves	39737.09
<b>Total Liquid Assets</b>	<b>56993.04</b>

Application Reference	Address	Planning Details	Parish Council Comments	Babergh DC Comments
DC/19/03875	1 Tudor Cottages Sudbury Road, Newton	Listed Building Content - Replacement of fenestration on ground and first floor. Removal/replacement of side ground floor kitchen window to facilitate works to change to stable door.		Granted
DC/20/00421	Land to North East of Valley Farm, Valley Rd, Newton, Sudbury, CO10 0QQ	Application for Prior Notification of Agricultural Development - erection of a general purpose agricultural building. Town and Country Planning General Permitted Development Order 2015, Schedule 2, Part 6		Babergh Council has decided that formal approval is not required. Work to be carried out "exactly in accordance" with the details provided within 5 years.
DC/20/00859	Marks Meadow, Rectory Road, Newton, Suffolk	Outline Planning Application (Access to be considered all other matters reserved) erection of 3no. dwellings with garages and creation of new access.		Case Officer: Elizabeth Flood Still open for comments
DC/20/00755	Brook Farm, Sudbury Rd, Newton, Sudbury, CO10 0QJ	Householder Planning Application Erection of two-storey rear extension and installation of windows and door to south elevation. Erection of garage.		Case Officer: Jasmine Whyard Extension to make comments on 9th April granted to NPC.
DC/20/00804	The Little Bungalow, Sudbury Road, Newton CO10 0QS	Discharge of Conditions Application for DC/19/05659 Condition 3 (Access Surface Treatment), Condition 5 (Refuse Bins and Collection Areas) and Condition 6 (Surface Water Discharge Prevention)		Case Officer: Rose Walton Application Approved subject to conditions: Action Required Subject to First Occupation: Conditions 3,5 and 6.
DC/20/01139	Site Fronting The South West Side of A134 (formerly part of Braes Farm), Newton Green, Suffolk	Erection of a grain store, construction of concrete pad and alterations to existing field access.		Case Officer: Jasmine Whyard Extension granted to NPC to make comment on 9th April 2020

Local information is updated on  
our Facebook Group - please join  
if you haven't already?

[https://www.facebook.com/groups/  
NewtonVillageNewsletter/](https://www.facebook.com/groups/NewtonVillageNewsletter/)